

Asset Development Programs

Steps to Success (Skills Enhancement) Program

Assists individuals who are working a minimum of 20 hours at program entry and who make up to 150% of FPL with the opportunity to develop new skills or update and enhance current skills while continuing to work. The education or training must increase the participants' earning potential by at least \$3 per hour. This program is available to residents of Brown, Florence, Forest, Langlade, Marinette, Menominee, Oconto, Oneida, Shawano and Vilas Counties.

36 individuals served (14 males and 22 females, including 7 under the age of 13)

11 between the ages of 18-24
14 between the ages of 25-44
4 between the ages of 45-59

13 were employed part-time, 8 were employed full-time and all others were unemployed

5 Single Parent Female Households; 3 Two-Parent Households

Homeowner Assistance (HCRI) Program

HCRI provides assistance to low-income individuals with incomes up to 80% of CMI who are in danger of losing their home to foreclosure by helping them catch up on mortgage payments. This program is available to residents of Brown, Florence, Forest, Langlade, Marinette, Menominee, Oconto, Oneida, Shawano and Vilas Counties.

26 individuals from 12 households were served (11 males and 15 females, including 7 children under the age of 17)

2 were veterans

4 were employed full-time, 2 were employed part-time and 5 were retired

4 between the ages of 25-44

7 between the ages of 45-54

4 were aged 65+

1 single parent male household; 3 two-parent households and 1 multigenerational household

Create Your Own Opportunities Program (jobs and business development):

Provides technical assistance to individuals with incomes up to 180% of FPL who have sound ideas for establishing a small business but lack the expertise and knowledge to succeed. The objective of the CYOO Program is to enable participants to leave welfare or find a way out of minimum-wage, dead-end jobs and be able to look to a productive future as small business owners. This program is available to residents of Brown, Florence, Forest, Langlade, Marinette, Menominee, Oconto, Oneida, Shawano, and Vilas Counties.

19 individuals from 9 households were served (9 males and 10 females, including 6 children under the age of 17)

5 between the ages of 25-44

4 between the ages of 45-54

4 between the ages of 54-64

2 veterans

4 had a 2 or 4 year College Degree

2 employed full-time, 1 employed part-time, 2 retired and all others unemployed

2 two parent households

Financial Capabilities Program

An individualized program to assist individuals and families learn to increase their financial stability and security through financial education and training. This program is available to residents of Brown, Florence, Forest, Langlade, Marinette, Menominee, Oconto, Oneida, Shawano and Vilas Counties.

Served 233 individuals from 97 households (104 males and 129 females, including 45 children under the age of 17)

28 between the ages of 18-24

77 between the ages of 25-44

23 between the ages of 45-54

21 between the ages of 55-64

19 aged 65+

36 were employed full-time; 37 were employed part-time, 43 were unemployed and 10 retired

30 disabled

9 veterans

39 had some post secondary education, 9 had either a 2 or 4 year college degree, and 1 had a Graduate level degree

31 were single parent females; 1 single parent male, 19 two-parent households and 2 multigenerational households

28 owned their own home, 51 rented their homes, 3 were homeless, while 2 others were living in permanent housing through housing programs

WIOA Adult & Dislocated Workers Program

Assists individuals obtain employment or assistance with additional training to retain or advance the individual's employment opportunities. This program is available to residents of Florence, Marinette and Oconto counties.

181 individuals from 84 households were served (87 males and 94 females, including 62 children under the age of 17)

26 between the ages of 18-24

54 between the ages of 25-44

19 between the ages of 45-54

19 between the ages of 55-64

1 aged 75+

4 veterans

9 disabled

76 employed (23 full-time), all others unemployed

23 Single Parent Households, 13 Two Parent Households

Community Health Services

Provides reproductive and healthcare services for males and females, including clinical exams, contraception education and prescriptions, emergency contraception, pregnancy testing and counseling, STD and HIV testing and counseling, and other reproductive healthcare services. For those who are all-insured, un-insured and under-insured. Clinics also offer family planning and an array of primary care services. These services are offered to those in Brown, Forest, Marinette, Oconto and Vilas Counties.

Served 1,811 patients; 303 males and 1,514 females. 960 had health insurance. 572 of these were new patients. The clinics had a total of 3,128 visits.

0-5: 55

6-13: 57

14-17: 115

18-24: 578

25-44: 886

45-54: 87

55-64: 22

65+: 5

476 were Hispanic, 35 were Native Americans, 17 were of Asian Origin,

134 were African Americans, 667 were White

5 were active military, 1 veteran

1,014 were employed (579 full-time), 535 were unemployed

164 Single Parent Households

306 Two-Parent Households

Rural Economic Area Development Initiative (READI) Program

Provides loans or grants to businesses to start or expand and to train workers.

Newcap

Advocating. Believing. Achieving.

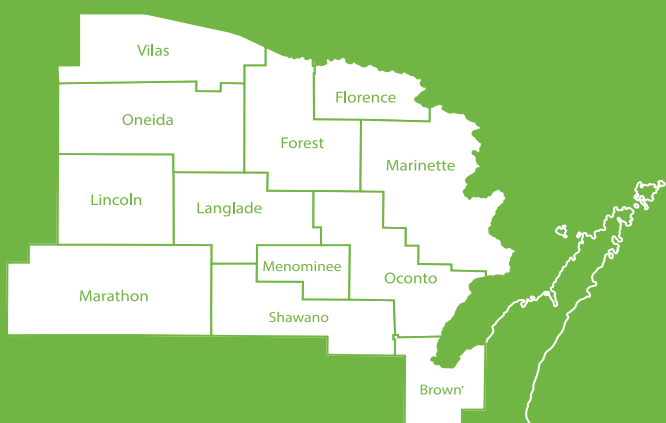
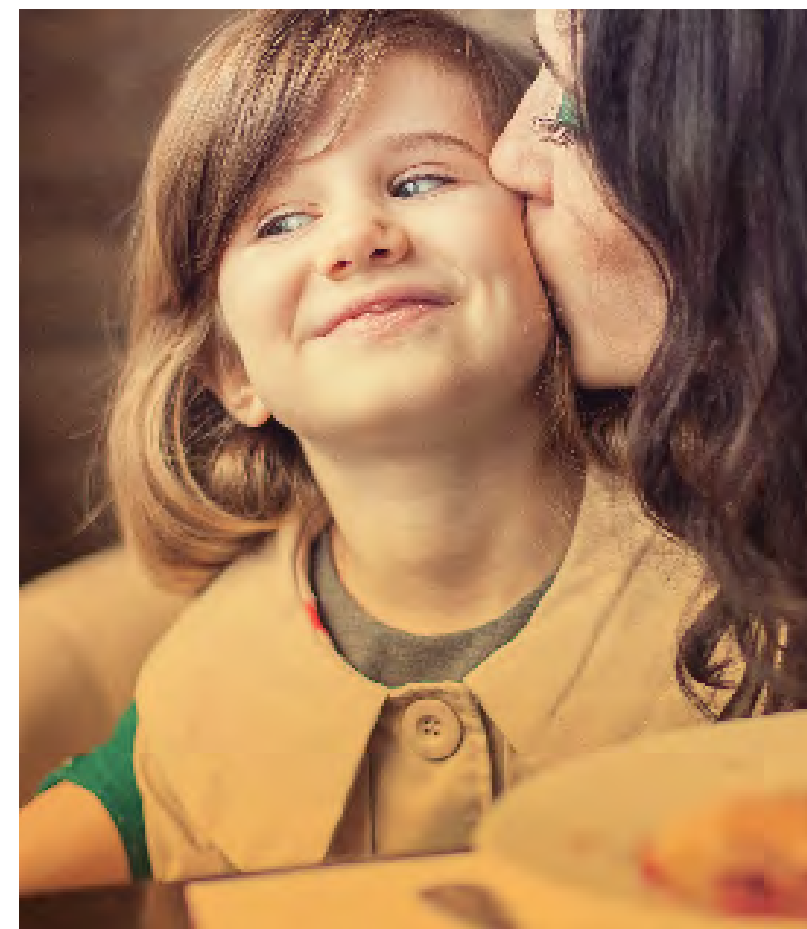
Our 2018 Story



For 53 years, Newcap has been dedicated to discovering the symptoms of poverty, and helping relieve its consequences by identifying and correcting the root causes of that poverty. Our mission - our every day effort and focus - is to move people from poverty to economic security to independence. We touched many lives in 2018, and for that we are most honored, proud, and grateful. It provided us with a substantial foundation for our efforts already underway for 2019 and beyond.

We are a Community Action Agency, and receive Community Service Block Grant (CSBG) funds via the Wisconsin Department of Children and Families. CSBG funds are allocated with a formula calculated based population in poverty and employment statistics. Newcap receives the third highest CSBG allocation of the 16 CAP's and two general-purpose entities in Wisconsin. Our service area footprint is also the largest.

As we look to 2019, one of our goals is to create an integrated, agency-wide database to collect, store, and easily retrieve data on our services and those we serve, as well as better identify need in our communities. Because we have yet to establish that system, we report our 2018 information in segments based on services provided.



Our primary service area includes 14 counties covering over 8,500 square miles in northern and northeastern Wisconsin

Service Area

Brown - Florence - Forest - Langlade
Marinette - Menominee - Oconto
Oneida - Shawano - Vilas

We work primarily with a rural population of just over 472,000 persons.

We also provide Housing Choice Vouchers (Section 8) in two other counties (Iron and Price) and manage The Emergency Food Assistance Program (TEFAP) in yet another two counties (Marathon and Lincoln). In 2018, Newcap ran 26 programs in all or part of 14 counties covering just less than 13,000 square miles and serving over 655,000 lives.

For more information on these and other NEWCAP services, go to Newcap.org or call 800-242-7334 and you will be directed to the program director that can best help in your situation.

Newcap’s 2018 programs and whom they served



Housing Programs

Brown County Family Permanent Supportive Housing Program

Provides permanent housing options to chronically homeless families in Brown County.

Served 6 individuals from 2 households, all female, living in a single parent female households (4 under the age of 17)
1 between the ages of 18-24 and the other between the ages of 45-54
3 Asian Ethnicity and the others White
1 Employed part-time and the other was unemployed
1 disabled

Brown County Youth Rapid Re-Housing Program

Provides up to 24 months of rental assistance and training and development by case management with independent living skills for each participant. Available to residents in Brown County.

Served 14 individuals from 6 households (6 males, 8 females, including 68 under the age of 13). All others between the ages of 18-24.
11 were African American, 1 Hispanic, 3 were white
4 disabled
2 employed (1 full-time), all others unemployed
2 Single Parent Female Household; All had been Homeless

Coordinated Entry

Provided direction to those who we were unable to serve for reasons such as ineligibility, gave information but never heard back, or passed on to programs they were eligible for with a different service agency. Coordinated Entry is used in every county.

Served 975 individuals from 404 households (438 males, 536 females, including 444 children under the age of 17)
71 between the ages of 18-24
295 between the ages of 25-44
87 between the ages of 45-54
56 between the ages of 55-64
22 aged 65+
166 employed (82 full-time), 19 retired, all others unemployed
188 disabled
15 veterans and 1 active military
141 Single Parent Female Households, 18 Single Parent Male Households, 54 Two Parent Households, 3 multigenerational households, 139 were Homeless

Diversion

A pilot program designed to help those facing imminent homelessness to strategize to find resources and options as to avoid shelters or homelessness. Diversion is used in every county.

100 individuals from 40 households were served (49 males and 51 females, including 42 under the age of 17)
27 employed (20 full-time), all others unemployed
12 disabled
21 Single Parent Households (17 Female single parents)
8 Two-Parent Households
13 were homeless already

Domestic Violence Rapid Re-Housing Program

This program will be starting at Newcap in July 2019. This project will use the Housing First Approach and will serve individuals and families that are residing in places not meant for human habitation, an emergency shelter or coming directly from the streets, and persons who qualify under category 4 of HUD’s definition of homelessness. This program will have a

specific plan that will ensure all program participants obtain mainstream health, social and employment programs that they are eligilbe for and that meet their needs. Program participants will be assisted by the Community Advocate to obtain and remain in permanent housing in a manner that fits their needs. They will have transportation provided for them to access needed services, assist with safety planning, case management and other assistance to help them ensure retention of permanent housing. The Community Advocate will assist the individuals and families to identify housing that will meet their needs. They will also use mobile advocacy which means they will meet the survivors in the location of their choice, keeping safety and confidentiality in account. The Community Advocate will work in the community to build lasting connections with the goal of engaging community members in supporting survivors’ safety, independence and housing stability. This program will be availble to residents in Florence, Forest, Langlade, Marinette, Menominee, Oconto, Oneida, Shawano, and Vilas Counties .

Emergency Solutions Grant (ESG) Program

This program targets individuals/families who are literally homeless. It is to assist homeless persons living on the streets or in an emergency shelter transition as quickly as possible into permanent housing, and then to help such persons achieve stability in that housing. This program is available to residents in Florence, Forest, Langlade, Marinette, Menominee, Oconto, Oneida, Shawano and Vilas Counties.

Served 51 individuals from 26 households (16 males and 35 females, including 22 children under the age of 17)

2 between the ages of 18-24
16 between the ages of 25-44
7 between the ages of 45-54
3 between the ages of 55-59
1 between the ages of 65-74
8 disabled
7 employed (3 full-time), all other unemployed
10 Single Parent Female Households
12 rented their homes, 9 were homeless

Homebuyer “HOME” Program

Provides low-moderate income homebuyers with a maximum of \$10,000 (based on program affordability) for down payment and closing costs through a non-interest bearing loan. This program is availabe to residents in Brown County (excluding the city of Green Bay), Florence, Forest, Langlade, Marinette, Menominee, Oconto, Oneida, Shawano, and Vilas Counties.

Served 430 individuals from 158 households (209 males and 211 females, including 56 children under the age of 17)
70 between the ages of 18-24
142 between the ages of 25-44
61 between the ages of 45-54
57 between the ages of 55-64
46 aged 65+
130 were employed full-time; 34 were emloyed part-time; 46 were unemployed and 15 were retired.
44 Two Parent households, 34 Single parent female households/4 single parent male
38 disabled

Homeless Prevention Program

Targets individuals/families that have an eviction of 14 days or less. The case manager will work with the landlord to mediate the situation, if possible and/or assist the applicant in finding another unit. This program is available to residents in Brown, Florence, Forest, Langlade, Marinette, Menominee, Oconto, Oneida, Shawano, and Vilas Counties.

Served 109 individuals from 34 households (41 males and 68 females, including 63 children under the age of 17)

18 African Americans, 11 Hispanic, 18 Native Americans
16 disabled
18 employed (11 full-time), all others were unemployed
23 Single Parent Housholds(18 Female), 4 Two Parent Households
13 rented their homes, 4 were already homeless
7 between the ages of 18-24
27 between the ages of 25-44
12 between the ages of 45-64

Permanent Supportive Housing Program

Provides long-term housing with supportive services for homeless persons with disabilities by reintegrating chronically homeless and other highly vulnerable homeless families and individuals with psychiatric disabilities or chronic health challenges into the community by addressing their basic needs for housing and providing ongoing support. This program is available to residents in Brown, Florence, Marinette, Menominee, Oconto and Shawano Counties.

90 individuals served from 78 househlds (66 males and 24 females, including 6 children under the age of 17)
69 disabled
7 veterans
5 employed full-time; 7 employed part-time; all others unemployed
16 were Native Americans, 10 African Americans, all others were white
17 rented their homes, 41 lived in another form of permanent housing
18 were homeless

Section 8 Housing Choice Voucher Program

Provides rental subsidies to low-income families, senior citizens, handicapped, and disabled individuals who reside in rental housing to widen housing opportunities for lower income families by assisting them in obtaining adequate and affordable housing. This program is available to residents Florence, Forest, Langlade, Oconto, Oneida, and Vilas Counties.

490 individuals served from 245 households (211 males and 278 females, including 196 children under the age of 17)
28 between the ages of 18-24
104 between the ages of 25-44
55 between the ages of 45-54
55 between the ages of 55-64
28 between the ages of 65-74
24 aged 75+
32 Native American, 21 Hispanic, 27 African American and all other were white
150 disabled
66 employed (21 full-time), 28 retired, all others unemployed
74 Single Parent Female Households, 12 Single Parent Male Households, 8 Two Parent Households
4 rented their homes, 206 rented, 15 were homeless

State Shelter Subsidy Grant (SSSG) Program

This program assists people experiencing homelessness with shelter in a nearby motel. This program is available to residents in Florence, Marinette, Menominee, Oconto and Shawano Counties.

Served 33 individuals from 20 households (15 males and 18 females, 7 children under the age of 17)
2 between the ages of 18-24
13 between the ages of 25-44
4 between the ages of 45-54
4 between the ages of 55-64
3 aged 65+
10 disabled
1 employed part-time, all others unemployed
2 Single Parent Female Households, 1 two parent household
13 were homeless

SSI/SSDI Outreach, Access, and Recovery Initiative (SOAR) Program

A national model created by Substance Abuse and Mental Health Services Administration that assists individuals who are homeless or at risk of being homeless apply for SSI/SSDI. The individual has to have a serious mental illness or exhibit symptoms of a serious mental illness that impacts their ability to work at a substancial gainful level. This program is available to residents in Brown, Florence, Forest, Langlade, Marinette, Menominee, Oconto, Oneida, Shawano, and Vilas Counties.

27 individuals served from 26 households (15 males and 12 females)
3 between the ages of 18-24
9 between the ages of 25-44
11 between the ages of 45-54
4 between the ages of 55-59
3 veterans
All disabled
All but 4 unemployed (all 4 worked part-time)
6 African Americans, 3 Native Americans, all others were white
7 Single Parent Female Households, 1 Two-Parent Household
1 owned their home, 7 rented their homes, 4 were homeless, 3 others living in a form of permanent housing shelters

Tenant Based Rental Assistance (TBRA) Program

Providing rental assistance to individuals/families experiencing homelessness or those at imminent risk of becoming homeless. This program is available to residents in Brown (excluding the city of Green Bay), Florence, Forest, Langlade, Marinette, Menominee, Oconto, Oneida, Shawano, and Vilas Counties.

35 individuals from 13 households (19 males and 16 females, including 17 under the age of 17)
2 between the ages of 18-24
14 between the ages of 25-44
1 between the ages of 45-54
1 between the ages of 60-64
8 disabled
1 employed part-time, all others unemployed
4 Single Parent Female Households, 1 Two Parent Household
8 rented their homes, 3 were homeless

Navigators

Assists clients be wrapped in services no matter what program they enter Newcap in.

825 individuals from 382 households were served (356 males and 468 females - including 334 children under the age of 17)
138 Single Parent households; 53 Two Parent Households
132employed (74 full-time), 39 retired, all others were unemployed
86 had some post secondary education, 17 had a 2 or 4 year college degree and 1 had a Graduate degree
152 disabled
16 veterans
15 owned their homes; 101rented
131 were homeless
Age Grouping:
18-24: 61
25-44: 270
45-54: 75
55-64: 57
65-74: 15
75+: 11

Transportation Programs

Medical Mileage Reimbursement Program

Provides a reimbursement to those who drive participants for pre-approved medical mileage that are unable to take other transportation services that are offered in the area. Program available to residents of Marinette and Oconto counties.

15 individuals from 9 households were served (7 males and 8 females)
1 between the ages of 18-24
6 between the ages of 55-64
3 between the ages of 65-74
5 aged 75+
6 disabled
1 employed full-time, 2 unemployed and 12 retired
1 Single Parent Female Household
5 owned their own home, the others rented

Mobility Management Program

Provides a coordinated community-wide transportation network that assists elderly and disabled individuals in finding the transportation resources available to them. Program available to residents in Marinette and Oconto counties.

My Garage: A Community Project Program

Provides simple repairs and maintenance on cars owned by elderly, disabled or low-income residents in Marinette and Oconto counties.

Served 47 individuals from 19 households (20 males and 27 females, including 20 children under the age of 17)

13 between the ages of 18-44
10 between the ages of 44-64
4 between the ages of 65-74
11 disabled
8 employed (6 full-time), 12 unemployed, 5 retired
6 Single Parent Female Households, 3 Two Parent Households

Work N Wheels Program

Program provides help to income-eligible individuals with assistance in obtaining an affordable, dependable vehicle in order to get to work-related activities. This program is available to residents in Brown, Florence, Forest, Langlade, Marinette, Menominee, Oconto, Oneida, Shawano, and Vilas Counties.

189 individuals from 75 households were served (86 males and 103 females, including 79 children under the age of 17)
19 between the ages of 18-24
51 between the ages of 25-44
39 between the ages of 45-64
8 between the ages of 65-74
18 were disabled
91 employed (34 full-time), 2 retired
36 single parent households, 7 two parent households
8 owned their homes, 44 rented their homs and 2 were homeless

Energy Services Programs

Home Energy Plus Furnace Program

Provides year-round assistance to eligible low-income households when their primary heating system (Furnace) no longer provides heat, is inoperable, or becomes unsafe. This program is available to residents in Brown, Florence, Forest, Marinette, Menominee, Oconto, and Shawano Counties as well as the Mole Lake/Sokaogon/Chippewa, Oneida Nation, and Stockbridge-Munsee Tribes.

803 individuals from 351 households were served (371 males and 432 females)
Under 18: 240
18-24: 48
25-44: 130
45-64: 195
65-74: 92
75+: 98
Veterans: 45
Disabled: 193
Single Parent Households: 37
Two Parent Households: 46

Family Income Level:

Up to 50%: 30
51% to 75%: 36
76% to 100%: 53
101% to 125%: 75

126% and over: 157

Sources of income:

Employed: 161 (97 full-time)
Unemployed: 243
Retired: 159

Weatherization Assistance Program

Provides home weatherization assistance services to low-income individuals or families homes by receiving utility assistance through the State of Wisconsin, the U.S. Department of Energy, public benefits, and WHEAP. This program is available to residents in Brown, Florence, Forest, Marinette, Menominee, Oconto, Oneida, and Shawano Counties as well as Mole Lake/Sokaogon/Chippewa, Oneida Nation, and Stockbridge-Munsee Tribes.

1,263 individuals from 506 households were served (582 males and 681 females)
Under 18: 448
18-24: 55
25-44: 253
45-54: 138
55-64: 159
65-74: 100
75+: 120
Veterans: 57
Disabled: 201
Single Parent Household: 83
Two Parent Household: 105

Family Income Level:

Up to 50%: 68
51% to 75%: 47
76% to 100%: 74
101% to 125%: 75
126% and over: 242
Sources of income:
Employed: 290 (193 full-time)
Unemployed: 274
Retired: 208

Food Pantry Program

Provides emergency food supplies for households in a crisis situation. Newcap provides emergency food supplies in all of our counties.

Served 158,799 households including 274,184 adults, 135,176 children and 409,360 individuals with 3,717,497 pounds of food.